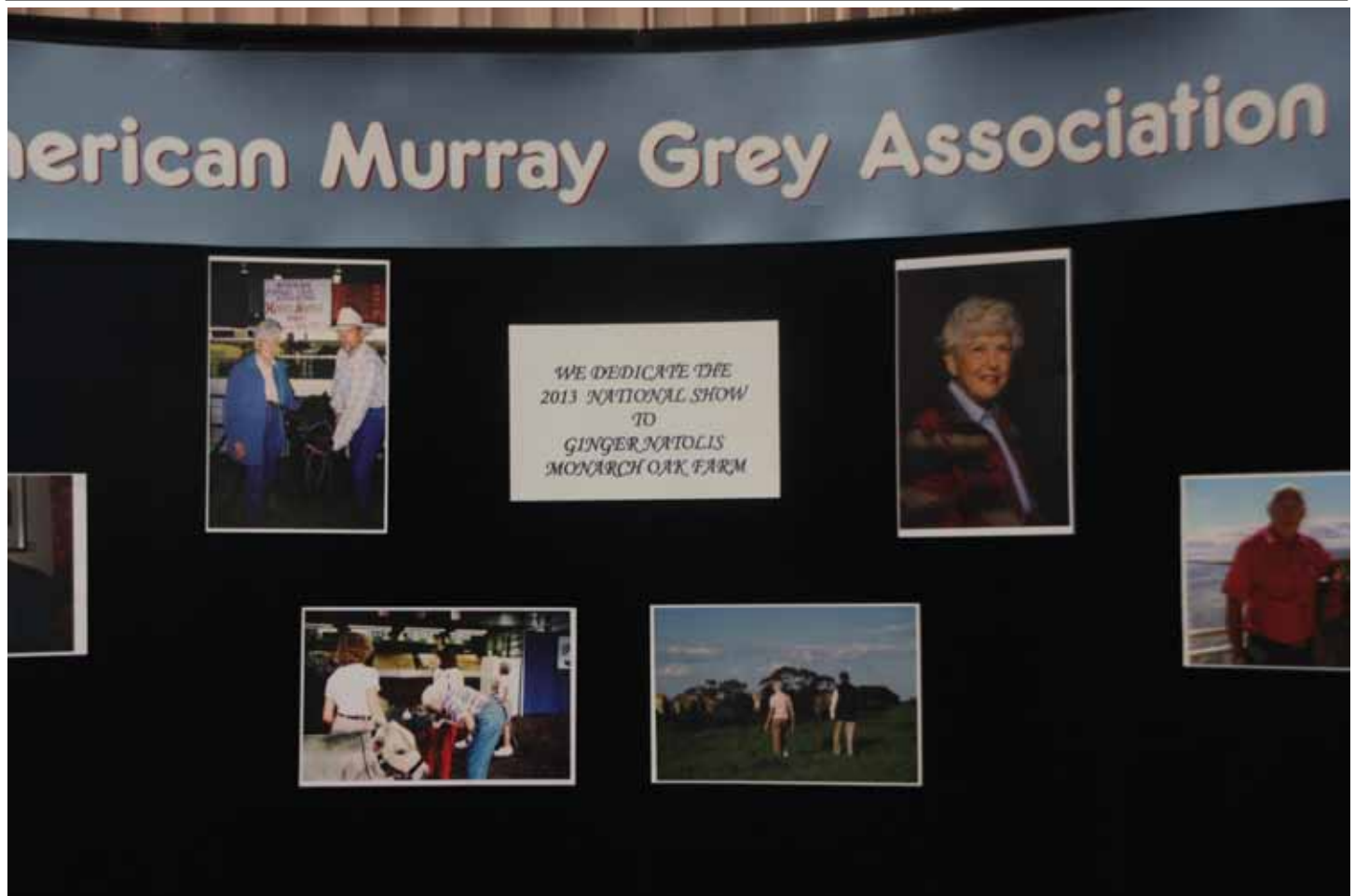


MURRAY GREY NEWS

The Official Publication of the American Murray Grey Association

June 2013



Inside This issue -

- Ginger Natolis Honored
- Directors Meeting
- National Show Results

- Reduced Pedigree Fee
- And More!





**2012
AMGA**



Directors

Sherie Clark - President

330 - 627 - 7438

Patti Flavel - Vice President

208 - 880 - 3762

Annette Pulliam - Secretary

502-738-5176

Julie Harris - Treasurer

541 - 572 - 2558

Dave Moeller Michael Birch

765 - 679 - 5071 410 - 557 - 6450

Casey Meeks

330 - 698 - 5021

Northwest Murray Grey Asso. Rep

Sharon Virtue

541 - 367 - 5164

Our Cover

**Eastern Murray Grey Asso. and AMGA dedicated
the 2013 National Show to Ginger Natolis of
Monarch Oak Farm, Marietta, OH.**

**We need good pasture photographs.
We invite all members to send pictures!**

See the Murray Grey News online!

www.murraygreybeefcattle.com/MGNEWS/newsonline.pdf

How to reach us -

AMERICAN MURRAY GREY ASSOCIATION

P.O. 43515

LOUISVILLE, KY 40253-0515

Phone: 502 - 384 - 2335

Fax: 866 - 571 - 2554

AMGAOffice@murraygreybeefcattle.com

<http://www.murraygreybeefcattle.com>

Early Registrations and DNA Testing Program

As an incentive to increase early registration and recording of valuable breeding information the association by vote of the executive committee has initiated a trial program. Beginning 7-1-2013 and running through 6-31-2014 breeders have the opportunity to register animals under 150 days of age for \$18 for pedigree only information. Under a special program, negotiated with the Igenity division of Neogen, members can submit genetic material and get the DNA profile information report for each animal and the pedigree only registration for a total charge of \$30. This compares with the current \$30 charge for pedigree registration by itself.

The AMGA profile is a bit abbreviated from the normal complete profile that costs \$38 for each animal, but includes information on many of the most valuable traits available. Tenderness, Maternal Calving Ease, % Choice/Marbling, Average Daily Gain, and Stayability are all important indicators of profitability for beef producers and this tool will help breeders in selecting animals for their herds and can be a valuable marketing tool for selling breeding stock.

So now breeders have several options for pedigree registrations. They can submit them within 150 days for \$18, submit them and DNA samples within 150 days for \$30, or wait beyond the 150 days up to 400 days for the normal \$30, or after that time for \$40.

We believe this new program will provide even better value for all our members!

2013 TATTOO LETTER



Business Services

529 Butler Rd.

Kittanning, PA 16201

724-545-3143

Print Shop: MariJo Klingensmith

Email: mjklingsmith@dsbiz.biz

Directors Meet in Columbus

The Board of Directors of the American Murray Grey Association met on Saturday March 16, 2013 at the National Murray Grey Show at the Ohio Beef Expo in Columbus, OH. Board members Julie Harris, Patti Flavel and Mike Birch were absent and excused from the meeting.

In Treasurer Julie Harris' absence, Executive Director John Gerow presented the 2012 Profit and Loss Statement to the Board. The Finance Committee had projected a break even year for 2012, but Gerow reported that the Association generated a \$1,200 profit for the 2012 operating year. The Finance Committee presented a budget for 2013 based on similar activity and accounting for increasing costs on several line items. The 2013 Budget projects another break even year for your Association. John and Gennie Gerow told the directors that they will be watching for ways to cut expenses as much as possible throughout the year.

The first such cost cutting measure, John reported, was that he prepared the Winter Sire Summary in the industry standard with the trait leaders (top 10%) highlighted in blue in each category. Changing to this format from the traditional sorting by category will save the Association over \$150 this year in printing costs.

Under Old Business, Gennie Gerow told the directors that there has been almost no interest among the members in advertising in the 2013 – 2014 AMGA Herdbook. She reported that only 1 member had purchased

an ad. The Directors discussed various options and have authorized the Gerows to produce a membership directory to be produced in lieu of the traditional HERDBOOK. The directory will be produced in house and will include members' names, contact information, product categories and will include an embryo/semen directory.

In the realm of New Business, the Board approved registration of 3 females over the age of 2 that a member had salvaged from a commercial herd.

On another genetic topic, the Directors denied a request to waive DNA identifiers on an older AI sire. A breeder had requested the waiver after using the last straw of semen from the older sire and getting a calf. After lengthy discussion the Directors decided that allowing this registration without DNA presented too many potential problems for a future Board and potential dangers to the integrity of the Herdbook. The Directors asked John Gerow to continue to publish AI rules and warnings in the hope of avoiding these issues in the future.

As this National Show was so early in the year, the Directors chose to hold the Annual Membership Meeting at a later date in the year. Sherie Clark moved that the Annual Membership Meeting and the next Directors meeting be held in Shelbyville, KY in late summer or fall. Office Manager Gennie Gerow has been offered free use of meeting rooms by her employers. Gennie will be working on an

continued on page 5

Ginger Natolis Honored

The Eastern Murray Grey Association and the American Murray Grey Association dedicated the 2013 National Show to long time breeder and exhibitor, Ginger Natolis of Monarch Oak Farm, Marietta, OH. At 84 years of age, Ginger has shown cattle at every Ohio Beef Expo Murray Grey show since its inception 26 years ago. Ginger has won many classes, divisions and grand championships at this show.

Ginger was totally surprised when she came into the barn Thursday morning and found pictures of her adorning the AMGA booth. AMGA members sent pictures of Ginger to be included and among the photos were ones of her at the Ohio State Fair and a couple taken in Australia. The show catalog also had several photos of Ginger and some of her OBE and other National Show champions.

Completing the honor, Ginger was named "2013 Murray Grey Queen" and presented ribbons during the show.

In Ginger's 26 year career at the Ohio Beef Expo she has been a perennial, positive ambassador for the breed and has sold many cattle to first time buyers at the show. Ginger's belief in the value and merit of Murray Grey cattle has never wavered and her enthusiasm and good spirit has never flagged. The Murray Grey breed in the United States is stronger and better for all of Ginger's hard work and positive outlook. We thank her for all that she has done for Murray Grey cattle.

2013 National Show

Ohio Beef Expo March 15, 2013 Columbus Ohio

Female Calf Champion

Circle S Faith

Circle S Stock Farm Endeavor WI

Res Female Calf Champion

Circle S Kashmere

Circle S Stock Farm Endeavor WI

Junior Champion Female

Victory Zola

Clark Farm Carrollton, OH

Res Jr Champion Female

Monarch Oak Miss Molly

Monarch Oak Farm Marietta OH

Senior Champion Female

LRF Y-Fi

Limestone Ridge Farm Bedford IN

Res Sr Champion Female

LRF Yahoo

Limestone Ridge Farm Bedford IN

Cow Champion

ATI Crown Jewel 002Y

OSU/ATI Wooster OH

Res Cow Champion

ATI Carnation 780 T

OSU/ATI Wooster OH

Grand Champion Female

Res Grand Champ Female

Limestone Y-Fi

ATI Carnation 780 T

Bull Calf Champion

Circle S Thunder

Circle S Stock Farm Endeavor WI

Res Bull Calf Champion

Victory Zig Zag

Clark Farm Carrollton, OH

Junior Champion Bull

LRF Zeppelin

Limestone Ridge Farm Bedford IN

Res Jr Champion Bull

Victory Zeus

Clark Farm Carrollton, OH

Senior Bull Champion

ATI Powerhouse 031X

OSU/ATI Wooster OH

Grand Champion Bull

Res Grand Champion Bull

ATI Powerhouse 031X

Circle S Thunder

2013 National Show Supreme Chamion

ATI Powehouse 031X

Produce of Dam

RSA MS Thunder Queen 10P

Limestone Ridge Farm

Get of Sire

HA Prince Valiant

Limestone Ridge Farm

Best Pair

OSU/ATI

Premier Breeder & Premier Exhibitor

Limestone Ridge Farm

Dr. Tom Turner, Professor Emeritus Ohio State Universtiy Judge

Ohio Valley Supply Trophy Sponsor



**Grand & Supreme National Champion Bull
ATI Powehouse 031X**



**Grand Champion Female
LRF Y-Fi**



**Eastern MG Asso Members
gather to honor Ginger Natolis**



**Ginger Natolis (center) hears the story of the
"conspiracy" to honor her from Gennie Gerow
(left) and Sharon Virtue**

The "Murray Grey News" is published quarterly; March, June, September and December by the American Murray Grey Association, PO Box 43515, Louisville, KY 40253. All articles and advertisements should be sent to AMGA by the 10th of the month preceding publication. All "Letters to the Editor" must be signed. Disclaimer: Advertisers assume full responsibility for all content of advertisements printed as well as any claims arising therefrom against the publisher. The American Murray Grey Association retains full editorial rights to all material submitted and may refuse to publish any advertisement, article or Letter to the Editor submitted.

To all my Murray Grey Friends!

Golly Gee, it was a total surprise! What a bunch of AMGA secret agents you are to have kept this secret for so long. It certainly was a wonderful (and also humbling) experience for me to have the 2013 Natinal Show dedicated to me.

I appreciate all of you who sent photos and exerted efforts to do this. I will never forget the caring and kindness that was shown to me. We'll always be going forward together in AMGA with the world's best beef cattle.

I wish each of you a wonderful future with our "lovely" Greys, as I heard them say Down Under.

With all my sincerest thanks and good wishes,
Ginger Natolis

DIAMOND G FARM REGISTERED MURRAY GREYS



DG Rachael's
Xenon 2X
March 2010
For Sale

GEORGE & CHERYL GERMAINE

PO Box 164
Vader, WA 98593
360-295-8324

email: DiamondG4@centurytel.net



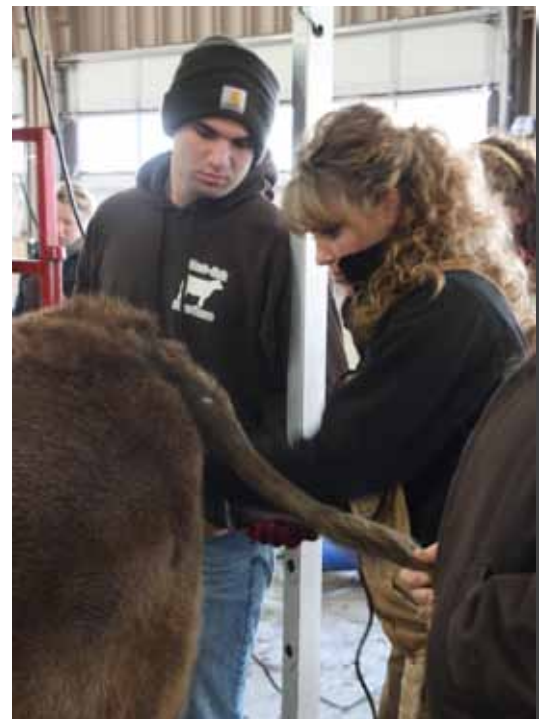
**Limestone Ridge Farm Crew
Stacey & Steve Cummings
and Tori Gardner**

Directors Meet (from page 2)

Itinerary for a tour of the Area, perhaps including a visit to a tobacco farm, horse farm and other sights of interest. Watch the June MG NEWS for more information.

Director Dave Moeller asked the Board to consider lowering registration fees for Pedigree registrations. He also asked that the Board consider putting genetic carcass trait results on certificates for members who are doing the testing. This topic was referred to committee for development with the goal of having a price structure ready to present to the Executive Committee as quickly as possible.

**2013 Annual Membership
Meeting
Shelbyville, KY
Dates to be Announced
Watch the website**



**OSU/ATI Students Grooming
a heifer at the National Show**

Carcass Quality Feed Efficiency



Francene

Just flushed to Marire Gambler.

Will turn 14 years of age June 1! Proven Longevity!

Proven Grass Genetics
Semen Embryos Breeding Stock
Retail Freezer Beef Available!

Larry Lampman

Fox Hill Farm Grassfed Beef

887 E. Ancram Rd. Ancramdale, NY 12503

Phone: 518- 810-3274 Lampman1@fairpoint.net

For Sale

Purebred & High Percentage Murray Grey Bulls

These young bulls are excellent for use
on heifers and dairy heifers.
Our bulls are tested to be sound breeders
at 12 months of age.

Call or email for more information.

Le Center Farm

Tom & Lucy Helfter

26929 376 Street

Le Sueur, MN 56058

507 - 665 - 2934

Email: thelfter@aol.com

Poverty Hill

Since 1995



Eagles Run High Roller will be for sale at the
end of this breeding season.

We are looking for a 2013 born bull calf for
next breeding season.

We may have a few females for sale in the fall.

Mark Cohen

583 Sylvain Road St Johnsbury, VT 05819

802 - 748 - 9681

email: Mlangmaid@vtlink.net



We will have a select group of bred cows
for sale this fall.

Weanling bulls will be available.

Monarch Oak Mister Charley's first calves are
on the ground and they are nice!

Monarch Oak Farm, LLC

Ginger Natolis

Calvin & Jared Huck

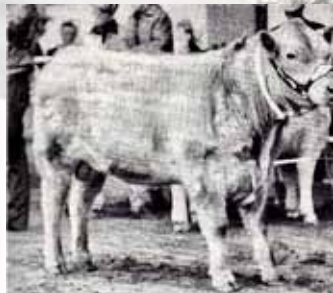
350 Ash Road Marietta, OH 45750 - 7861

Ph/Fax: 740 - 374 -2910

Email: monarchoak@murraygreybeefcattle.com

What do Olympia's Pelion, and Thurloo Park Winchester have in common with the famous actress from the 1980's? Bo Derek?

They all are perfect "10's"!



Introducing Tender Grass Genetics

Tender Grass Genetics is joint venture of four regional Murray Grey breeders who are developing and marketing genetic material (semen and embryos) from outstanding Murray Grey and Squaremeater cattle. We use the latest DNA profiles to identify breeding stock that have high composite scores for carcass qualities and longevity in our commercial herds. We currently are offering semen from two great bulls Winchester and Olympia that both score a perfect 10 for tenderness. We will also have embryos this summer from Dams with 10's bred to these outstanding bulls! Currently only 1 1/2 % of all bovines carry score a 10 for tenderness with most showing up in MG and Angus breeds. We want to improve those numbers in our herds and yours!

If you want to put some "10's" to work in your herds call or visit one of our cooperator herds below!

Chris Fry in Louisiana- 225-667-6622 Carolyn Watson in Colorado- 970-259-0138
Dave Moeller in Indiana- 765-679-5071 Adam Lasch in Wisconsin- 262-749-8412

HA Xpress 27X For Sale!

Sire: Twin Fir Black Powder Dam: HA Tomorrow



XPRESS YOUR BREEDING PROGRAM. SEMEN AVAILABLE F HA XPRESS 27X

Victory Zazzy is one example of putting Xpress into your program. Congratulations to ATI/OSU as new owners of Zazzy.

Victor and Sherie Clark
Carrollton, Ohio Phone: 330-627-7438
email clark3056@earthlink.net www.victorymurraygreys.com